

TECHNISCHER RIDER KULTURFABRIK LYSS - HALLE

Kapazitäten

Grösse	200 m ²
Stehplätze	700 (540 Erdgeschoss / 160 Galerie)
Sitzplätze	ca. 250 (200 Erdgeschoss / 50 Galerie)
Festwirtschaft	ca. 150 (nur Erdgeschoss)

Bühne

Masse	Breite: 10.2 m Tiefe: 4.95 m Bühnendeckenhöhe: 4.5 m Bühnenhöhe: 1 m
-------	---

Bühnenausbau: Podeste 2x1 m / 1x1 m /
 0.5x2 m mit Steckfüssen
 (20-90 cm) vorhanden

Bühnenrost: 1x Hochzug für gesamtes
 Bühnentruss / Grundlicht
 siehe Technik

Bühnenvorhänge: Schwarz / Feuerfest:
 1x Rückwand, 2 Seiten,
 Front (U-Form)

Hauptvorhang Front: Anthrazit / Feuerfest
 (elektrischer Zug)

Crowd Barriers: Wir verfügen über keine
 Crowd Barriers!



Backstage

2 Backstageräume befinden sich im 1. Stock hinter der Bühne, inklusive Sanitäranlagen mit WC, Pissoir und Dusche. Zudem sind sie ausgestattet mit WiFi und Netzwerkanschlüssen.

Anlieferung

Direkt hinter der Bühne befindet sich die gedeckte Anlieferungszone. Türbreite (Flügeltüre) 1.84 m. Mittels Rampe kann Roll-Material auf die Bühne geschoben werden.



TECHNIK

Stand: Februar 2017, Änderungen vorbehalten.

SOUND

FOH (Digital oder Analog, Auswahl nach Anforderung)

- SET1: 1 FOH-Konsole Soundcraft VI1
(32 Inputs / 16 Outputs)
- SET 2: 1 FOH-Konsole Yamaha LS-9
(32 Inputs / 16 Outputs)
- SET 3: 1 FOH-Konsole Soundcraft MH3
(44/12/8/2)

Mikros & DI (Bühnen Standard)

- 1 Mik Tool-Case
- 5x SHURE SM58
- 1x SHURE SM58 Schalter
- 2x SHURE SM58A beta
- 5x SHURE SM57
- 1x SHURE SM52 beta
- 1x SHURE SM91 beta
- 3x SHURE SM81 condenser
- 3x Sennheiser e604 clip
- 1x Sennheiser e606 brick
- 1x Sennheiser e906 brick
- 8x BSS AR133 DI-Box

Stands (Bühnen Standard)

- 1 Stand Tool-Case
- 14x K&M boom stand
- 6x K&M tall stand
- 2x K&M small stand

Monitoring 8 Wege-Set

- 6x SEEBURG M3 wedge 800W
- 1x M181T 18" Sub
- 2v SEEBURG TSM15 wedge 500W
- 2x LAB Gruppen Q6000 4x 1500W
Poweramp

PA-System 1 Very High Definition System (Flugversion)

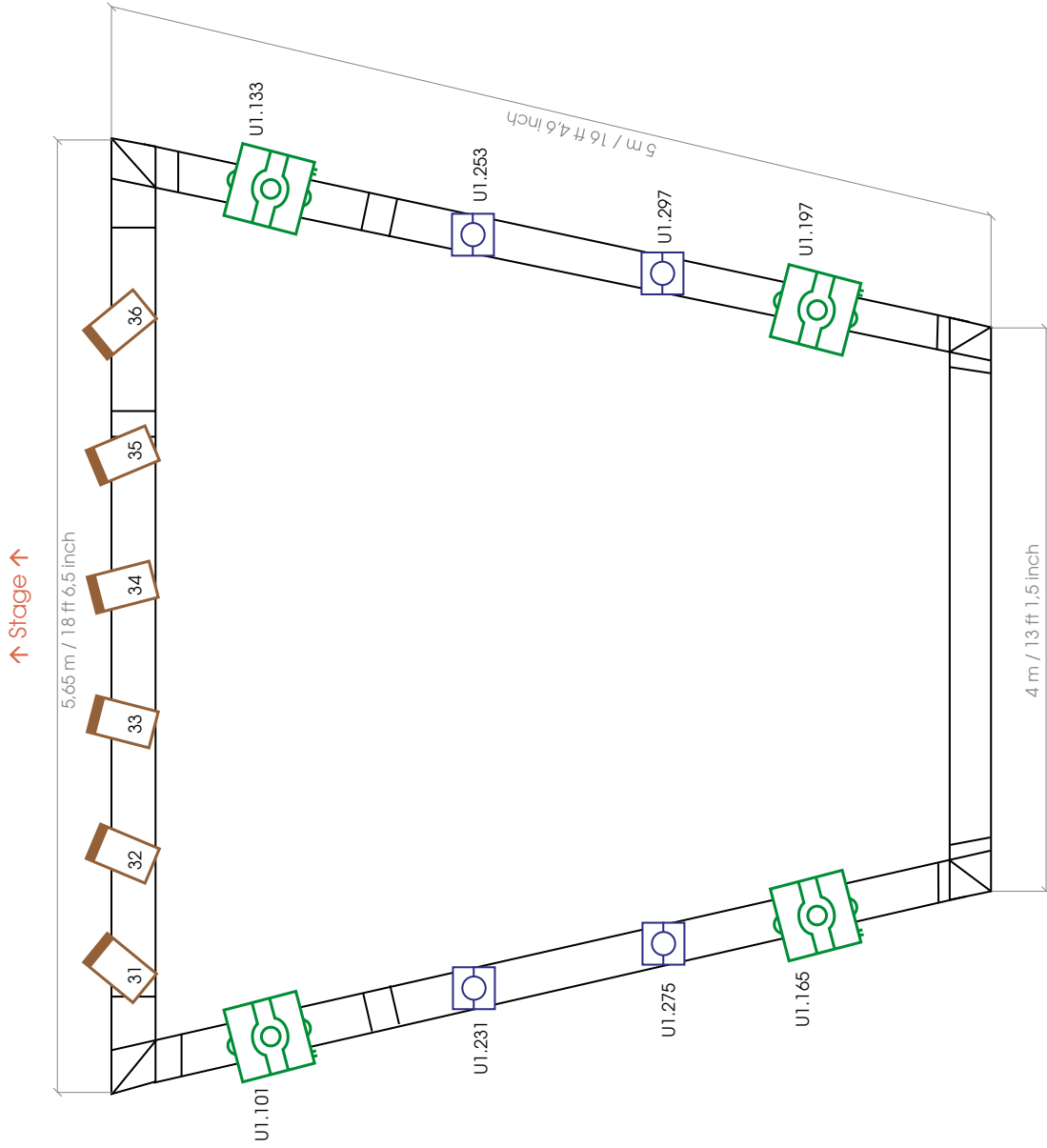
- 1x KV2 AUDIO VHD 2.0 System
- 2x KV2 VHD 2.0 TOP 3 Way
2x 12"/2x6.5"/1.4"
- 8x KV2 VHD 4.18 SUB 18"
- 2x KV2 VHD 2000 6MHz digitally
controlled AMP
- 2x KV2 VHD 3200 digital AMP
- 1x KV2 VHD LineDriver 50Ohm
- 1x KV2 EX10 activ NEARFILL 10"/1.4"
- 2x Flycradle for VHD2.0
- 1x Flycradle for EX10

Kabelsatz Audio power/signal/speaker

- 1x Kabelset T13/XLR/Speakon/
Adapter 140Stk.










RIGG-PLAN KULTURFABRIK HALLE

DISCO TRUSS



RIGG-PLAN KULTURFABRIK HALLE

Erklärung

	2x	4 Par 36 ACL
	36x	Par 64 CP61 (all in U1)
	6x	1kW Frensel
	12x	ROBE Robin Viva CMY (Mode 1/32 Channels)
	4x	ROBE Robin LED Beam 150 (Mode 1/22 Channels)
	2x	Blinder 4x
	1x	Atomix 3000 Strobe
	2x	Clamlight 1kW
	2x	Haze Base - base*hazer*pro

- 1x MA Dot2 XL-F (controlling device)
- 12x additional dimmer channels
- 4x DMX splitter with a line to FOH
- 4x Stage Lift (electrical chain pull) 500 kg
- 4x Disco Truss Lift (electrical chain pull) 250 kg

PATCHLIST LIGHT HALLE

Dimmable lights

Patch	What	Mode	Where
1.001	PAR 64	-	Stage rig - Backtruss
1.002	PAR 64	-	Stage rig - Backtruss
1.003	PAR 64	-	Stage rig - Backtruss
1.004	PAR 64	-	Stage rig - Backtruss
1.005	PAR 64	-	Stage rig - Backtruss
1.006	PAR 64	-	Stage rig - Backtruss
1.007	PAR 64	-	Stage rig - Midtruss
1.008	PAR 64	-	Stage rig - Midtruss
1.009	PAR 64	-	Stage rig - Midtruss
1.010	PAR 64	-	Stage rig - Midtruss
1.011	PAR 64	-	Stage rig - Midtruss
1.012	PAR 64	-	Stage rig - Midtruss
1.013	PAR 64	-	Stage rig - Sidetruss back left
1.014	PAR 64	-	Stage rig - Sidetruss back left
1.015	PAR 64	-	Stage rig - Sidetruss back left
1.016	PAR 64	-	Stage rig - Sidetruss front left
1.017	PAR 64	-	Stage rig - Sidetruss front left
1.018	PAR 64	-	Stage rig - Sidetruss front left
1.019	PAR 64	-	Stage rig - Sidetruss back right
1.020	PAR 64	-	Stage rig - Sidetruss back right
1.021	PAR 64	-	Stage rig - Sidetruss back right
1.022	PAR 64	-	Stage rig - Sidetruss front right
1.023	PAR 64	-	Stage rig - Sidetruss front right
1.024	PAR 64	-	Stage rig - Sidetruss front right
1.025	Clamlight	-	Stage rig - Backtruss
1.026	ACL's	-	Stage rig - Backtruss
1.027	Blinder 1 L	-	Stage rig - Frontruss
1.028	Blinder 1 R	-	Stage rig - Frontruss
1.029	Blinder 2 L	-	Stage rig - Frontruss
1.030	Blinder 2 R	-	Stage rig - Frontruss
1.031	Front 1 (Fresnel)	-	Stage rig - Frontruss
1.032	Front 2 (Fresnel)	-	Stage rig - Frontruss
1.033	Front 3 (Fresnel)	-	Stage rig - Frontruss
1.034	Front 4 (Fresnel)	-	Stage rig - Frontruss
1.035	Front 5 (Fresnel)	-	Stage rig - Frontruss
1.036	Front 6 (Fresnel)	-	Stage rig - Frontruss
1.037	Free Dim Channel	-	On stage
1.038	Free Dim Channel	-	On stage
1.039	Free Dim Channel	-	On stage
1.040	Free Dim Channel	-	On stage
1.041	Free Dim Channel	-	On stage
1.042	Free Dim Channel	-	On stage
1.043	Free Dim Channel	-	Disco rig
1.044	Free Dim Channel	-	Disco rig
1.045	Free Dim Channel	-	Disco rig
1.046	Free Dim Channel	-	Disco rig
1.047	Free Dim Channel	-	Disco rig
1.048	Free Dim Channel	-	Disco rig
1.049	Free Channel	-	-
1.050	Free Channel	-	-
1.050	Haze Base - base*hazer*pro	2 Ch.	On stage
1.052	Haze Base - base*hazer*pro	2 Ch.	On stage
1.054	Strobe Atomic 3000	4 Ch.	Stage rig - Backtruss

1.058 up to 1.100 are free channels

PATCHLIST LIGHT HALLE

Movable lights

Patch	What	Mode	Where
2.001	Robe Robin Viva CMY	1 (32 Ch.)	Stage rig - Backtruss
2.033	Robe Robin Viva CMY	1 (32 Ch.)	Stage rig - Backtruss
2.065	Robe Robin Viva CMY	1 (32 Ch.)	Stage rig - Backtruss
2.097	Robe Robin Viva CMY	1 (32 Ch.)	Stage rig - Backtruss
2.129	Robe Robin Viva CMY	1 (32 Ch.)	Stage rig - Midtruss
2.161	Robe Robin Viva CMY	1 (32 Ch.)	Stage rig - Midtruss
2.193	Robe Robin Viva CMY	1 (32 Ch.)	Stage rig - Midtruss
2.225	Robe Robin Viva CMY	1 (32 Ch.)	Stage rig - Midtruss
1.101	Robe Robin Viva CMY	1 (32 Ch.)	Disco rig - Sidetruss left
1.133	Robe Robin Viva CMY	1 (32 Ch.)	Disco rig - Sidetruss right
1.165	Robe Robin Viva CMY	1 (32 Ch.)	Disco rig - Sidetruss left
1.197	Robe Robin Viva CMY	1 (32 Ch.)	Disco rig - Sidetruss right
2.393 up to 2.512 are free channels			
2.261	Robe Robin LED Beam 150	1 (22 Ch.)	Stage rig - Pipe
2.283	Robe Robin LED Beam 150	1 (22 Ch.)	Stage rig - Pipe
2.305	Robe Robin LED Beam 150	1 (22 Ch.)	Stage rig - Midtruss
2.327	Robe Robin LED Beam 150	1 (22 Ch.)	Stage rig - Midtruss
2.349	Robe Robin LED Beam 150	1 (22 Ch.)	Stage rig - Midtruss
2.371	Robe Robin LED Beam 150	1 (22 Ch.)	Stage rig - Midtruss
1.231	Robe Robin LED Beam 150	1 (22 Ch.)	Disco rig - Sidetruss left
1.253	Robe Robin LED Beam 150	1 (22 Ch.)	Disco rig - Sidetruss right
1.275	Robe Robin LED Beam 150	1 (22 Ch.)	Disco rig - Sidetruss left
1.297	Robe Robin LED Beam 150	1 (22 Ch.)	Disco rig - Sidetruss right
1.319 up to 1.512 are free channels			

DMX Line 3 & 4 are completely free and ready for your light.